



LW5224



# knitting

Designed by Cathy Payson

## What you will need:

**RED HEART® Super Saver®:** 2 skeins each 400 Grey Heather **A**, 319 Cherry Red **B**, 313 Aran **C**, 373 Petal Pink **D**, 631 Light Sage **E**, 322 Pale Yellow **F**

**Susan Bates® Knitting Needles:** 4.5 mm [US 7]

Stitch holder, yarn needle

**GAUGE:** 16 sts = 4" [10 cm]; 23 rows = 4" [10 cm] in Stockinette stitch (knit on right side, purl on wrong side). **CHECK YOUR GAUGE.** Use any size needles to obtain the gauge.

## BUY YARN



**RED HEART® Super Saver®**, Art. E300 available in solid color 7 oz (198 g), 364 yds (333 m); stripes, prints, multis and heathers 5 oz (141 g), 236 yds (215 m); flecks 5 oz (141 g), 260 yds (238 m) skeins



# Girls Fair Isle Tunic

Fair Isle is a small Scottish island where this color technique originated. This modern version features fantasy floral designs on the yoke of a girl's tunic.

**Directions are for size 4 years. Changes for sizes 6 years, 8-9 years and 12 years are in parentheses.**

**To Fit Chest:** 23 (25, 28, 30)" [58.5 (63.5, 71, 76) cm]

**Finished Chest:** 25 (27, 31, 33)" [63.5 (68.5, 78.5, 84) cm]

**Finished Length:** 19½ (20, 20½, 21)" [49.5 (51, 52, 53.5) cm]

## Pattern Stitch

### 2x2 Rib (multiple of 4 sts + 2)

**Row 1 (wrong side):** P2, \*k2, p2; repeat from \* to end of row.

**Row 2:** Knit the knit sts and purl the purl sts to end of row.

Repeat Row 2 for 2x2 Rib.

## Special Stitch

**M1 (make 1 - increase)** = Lift strand between needles to left-hand needle and knit strand through the back loop, twisting it to prevent a hole.

## Notes

1. Tunic is worked in 4 pieces: Back, front and two sleeves.
2. Pieces are worked in Stockinette stitch with Fair Isle and Intarsia colorwork sections.
3. The four different colorwork patterns can be worked by following the charts or reading the written instructions.
4. While working the colorwork, you may wish to work some patterns using Fair Isle and others using Intarsia. When working Intarsia, roll separate balls of yarn for each section of color before beginning.
5. The first and last stitch of every row are selvedge stitches and can be worked in any color as these stitches will be hidden in the seam when garment is sewn together.

## BACK

With **A**, cast on 50 (54, 62, 66) sts.

## Ribbing

Beginning with Row 1 (wrong side) of pattern, work 2x2 Rib for 4 rows.

**Increase Row (wrong side):** Work Row 1 of 2x2 Rib, increasing 0 (2, 0, 2) sts evenly spaced—50 (56, 62, 68) sts.

## Body

Beginning with a right side (knit) row work in Stockinette st (knit on right side, purl on wrong side) for 4 rows.

## Colorwork Pattern 1

**Row 1 (right side):** With **B**, knit.

**Row 2:** With **C**, purl.

**Row 3:** With **C**, k1 (selvedge st), \*with **C**, k1; with **D**, k1; repeat from \* to last st, k1 (selvedge st).

**Row 4:** With **C**, p1, \*with **C**, p1; with **D**, p1; repeat from \* to last st, p1.

**Row 5:** With **C**, knit.

**Row 6:** With **B**, purl.

With **A**, work in Stockinette st until piece measures about 11 (11½, 12, 12½)" [28 (29, 30.5, 32) cm] from beginning, end with a wrong side row.

## Colorwork Pattern 1

Repeat Rows 1-6 of Colorwork Pattern 1.

With **C**, work in Stockinette st for 2 rows.

continued...



2015 - 2017  
**WOMEN'S CHOICE AWARD®**  
AMERICA'S MOST RECOMMENDED  
YARN BRAND



## Colorwork Pattern 2

**Row 1 (right side):** With **E**, knit.

**Row 2:** With **C**, purl.

**Row 3:** With **C**, k1 (selvedge st), \*with **C**, k1; with **E**, k1; with **C**, k1; with **D**, k1; with **C**, k1, with **E**, k1; repeat from \* to last st, k1 (selvedge st).

**Row 4:** With **C**, p1, \*with **C**, p1; with **D**, p3; with **C**, p2; repeat from \* to last st, p1.

**Row 5:** With **C**, k1, \*with **C**, k1; with **E**, k1, with **D**, k1; with **C**, k1; with **D**, k1; with **E**, k1; repeat from \* to last st, k1.

**Row 6:** Repeat Row 4.

**Row 7:** Repeat Row 3.

**Row 8:** With **C**, purl.

## Colorwork Pattern 3

**Row 1 (right side):** With **E**, knit.

**Row 2:** With **C**, purl

**Row 3:** With **C**, k1 (selvedge st), \*with **C**, k1; with **F**, k2; repeat from \* to last st, k1 (selvedge st).

**Row 4:** With **C**, p1, \*with **C**, p1; with **F**, p1; with **C**, p1; repeat from \* to last st, p1.

**Row 5:** With **C**, knit.

**Row 6:** With **E**, purl.

## Colorwork Pattern 4

**Row 1 (right side):** With **C**, knit.

**Row 2:** With **C**, p1 (4, 7, 2), \*with **C**, p1; with **F**, p1; with **C**, p5; with **B**, p1; with **C**, p3; with **B**, p1; with **C**, p4; repeat from \* to last 1 (4, 7, 2) sts; with **C**, p1 (4, 7, 2).

**Row 3:** With **C**, k1 (4, 7, 2), \*with **C**, k3; with **B**, k3; with **C**, k1; with **B**, k3; with **C**, k3; with **F**, k3; repeat from \* to last 1 (4, 7, 2) sts; with **C**, k1 (4, 7, 2).

**Row 4:** With **C**, p1 (4, 7, 2), \*with **C**, p1; with **F**, p1; with **C**, p4; with **B**, p3; with **C**, p1; with **B**, p3; with **C**, p3; repeat from \* to last 1 (4, 7, 2) sts; with **C**, p1 (4, 7, 2).

**Row 5:** With **C**, k1 (4, 7, 2), \*[with **C**, k1; with **B**, k2] 4 times; with **C**, k4; repeat from \* to last 1 (4, 7, 2) sts; with **C**, k1 (4, 7, 2).

**Row 6:** With **C**, p1 (4, 7, 2), \*with **C**, p3; with **B**, p4; [with **C**, p1; with **B**, p1] twice; with **C**, p1; with **B**, p4; repeat \* to last 1 (4, 7, 2) sts; with **C**, p1 (4, 7, 2).

**Row 7:** With **C**, k1 (4, 7, 2), \*with **C**, k1; with **B**, k4; with **C**, k1; with **E**, k1; with **C**, k1; with **B**, k4; with **C**, k2; with **F**, k1; with **C**, k1; repeat from \* to last 1 (4, 7, 2) sts; with **C**, k1 (4, 7, 2).

**Row 8:** With **C**, p1 (4, 7, 2), \*with **F**, p3; with **C**, p5; with **E**, p3; with **C**, p5; repeat \* to last 1 (4, 7, 2) sts; with **C**, p1 (4, 7, 2).

**Row 9:** With **C**, k1 (4, 7, 2), \*with **C**, k1; with **D**, k4; with **C**, k1; with **E**, k1; with **C**, k1; with **D**, k4; with **C**, k2; with **F**, k1; with **C**, k1; repeat from \* to last 1 (4, 7, 2) sts; with **C**, k1 (4, 7, 2).

**Row 10:** With **C**, p1 (4, 7, 2), \*with **C**, p3; with **D**, p4; [with **C**, p1; with **D**, p1] twice; with **C**, p1; with **D**, p4; repeat \* to last 1 (4, 7, 2) sts; with **C**, p1 (4, 7, 2).

**Row 11:** With **C**, k1 (4, 7, 2), \*[with **C**, k1; with **D**, k2] 4 times; with **C**, k4; repeat from \* to last 1 (4, 7, 2) sts; with **C**, k1 (4, 7, 2).

**Row 12:** With **C**, p1 (4, 7, 2), \*with **C**, p1; with **F**, p1; with **C**, p4; with **D**, p3; with **C**, p1; with **D**, p3; with **C**, p3; repeat from \* to last 1 (4, 7, 2) sts; with **C**, p1 (4, 7, 2).

**Row 13:** With **C**, k1 (4, 7, 2), \*with **C**, k3; with **D**, k3; with **C**, k1; with **D**, k3; with **C**, k3; with **F**, k3; repeat from \* to last 1 (4, 7, 2) sts; with **C**, k1 (4, 7, 2).

**Row 14:** With **C**, p1 (4, 7, 2), \*with **C**, p1; with **F**, p1; with **C**, p5; with **D**, p1; with **C**, p3; with **D**, p1; with **C**, p4; repeat from \* to last 1 (4, 7, 2) sts; with **C**, p1 (4, 7, 2).

**Row 15:** With **C**, knit.

**Row 16:** With **E**, purl.

With **A**, work in Stockinette st for 1¾" [4.5 cm], end with a wrong side row. With right side facing, bind off all sts as if to knit.

## FRONT

Work same as back until last row of Colorwork Pattern 4 is complete.

## Shape Neck

Work with **A** only.

**Row 1 (right side):** K16 (19, 20, 23), place center 18 (18, 22, 22) sts on holder for front neck, join a 2nd ball of **A** and knit to end of row – 16 (19, 20, 23) sts on each side of neck sts on holder.

Work both sides at the same time using separate balls of yarn.

**Row 2:** Purl across first side; on 2nd side, bind off 1 st, purl to end.

**Row 3:** Knit across first side; on 2nd side, bind off 1 st, knit to end – 15 (18, 19, 22) sts on each side.

**Rows 4-11:** Repeat last 2 rows 4 more times – 11 (14, 15, 18) sts on each side.

**Row 12:** Purl across sts of both sides. With right side facing, bind off all sts on both sides as if to knit.

## SLEEVES (make 2)

With **A**, cast on 26 (26, 30, 30) sts.

Ribbing

Beginning with Row 1 (wrong side) of pattern, work 2x2 Rib for 4 rows.

**Increase Row (wrong side):** Work Row 1 of 2x2 Rib, increasing 2 sts evenly spaced—28 (28, 32, 32) sts.

## Body

Beginning with a right side (knit) row work in Stockinette st (knit on right side, purl on wrong side) for 4 rows.

## Colorwork Pattern 1

**Row 1 (right side):** With **B**, knit.

**Row 2:** With **C**, purl.

**Row 3:** K1 (selvedge st), \*with **C**, k1; with **D**, k1; repeat from \* to last st, k1 (selvedge st).

**Row 4:** P1, \*with **C**, p1; with **D**, p1; repeat from \* to last st, p1.

**Row 5:** With **C**, knit.

**Row 6:** With **B**, purl.

With **A**, work in Stockinette st for 2 rows.

**Increase Row (right side):** K1, M1, k to last 2 sts, M1, k1—30 (30, 34, 34) sts. Work even in Stockinette st for 5 (3, 5, 3) rows.

Repeat Increase Row—32 (32, 36, 36) sts.

Repeat last 6 (4, 6, 4) rows 6 (3, 8, 4) more times—44 (38, 52, 44) sts.

## Sizes 6 years and 12 years Only:

With **A**, work even in Stockinette st for 5 rows.

Repeat Increase Row—40 (46) sts.

Repeat last 6 rows 4 (5) more times—48 (56) sts.

## All Sizes:

Work even in Stockinette st until piece measures about 11 (12, 13, 14)" [28 (30.5, 33, 35.5) cm] from beginning.

## Colorwork Pattern 1

Repeat Rows 1-6 of Colorwork Pattern 1.

**Next Row (right side):** With **B**, knit.

With **B**, bind off.

continued...



### FINISHING

Sew left shoulder seam.

#### Neck Band

With right side facing, pick up 10 sts along left neck edge, pick up 18 (18, 22, 22) front neck sts from holder, pick up 10 sts along right neck edge, pick up 24 (28, 28, 32) sts along back neck—62 (66, 70, 74) sts.

Work in 2x2 Rib for 3 rows.

With right side facing, bind off in pattern.

Sew right shoulder seam. Sew in sleeves.

Sew side and sleeve seams.

Weave in ends.

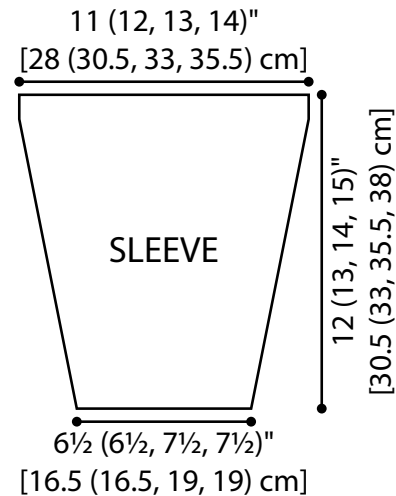
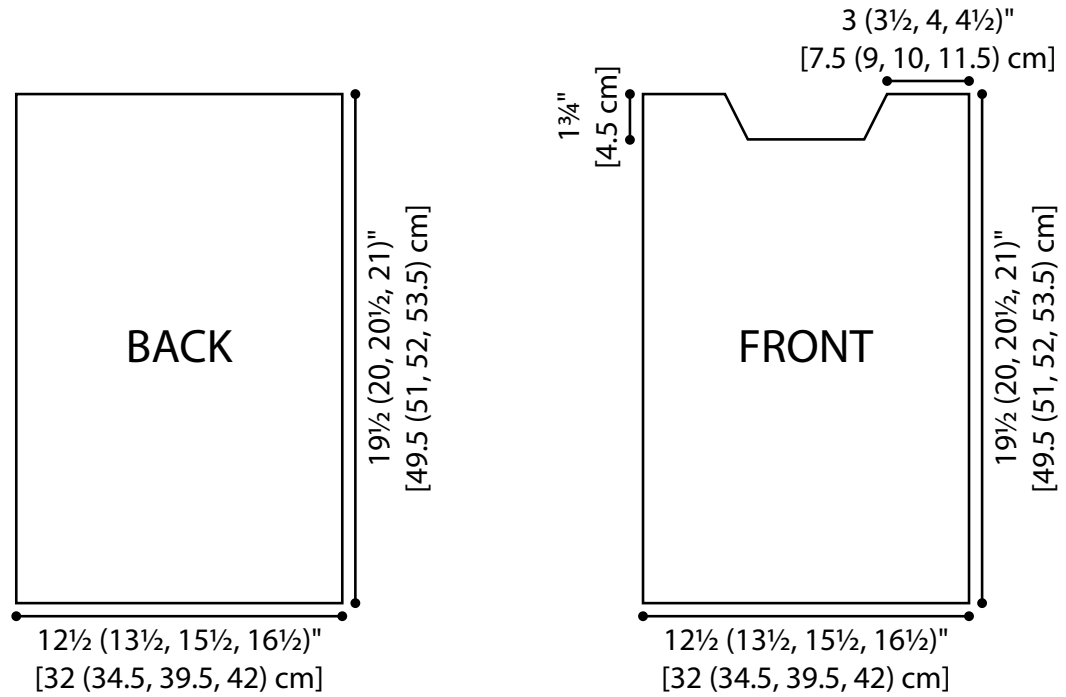
#### ABBREVIATIONS

A, B, C, etc. = Color A, Color B, etc.;

k = knit; p = purl; st(s) = stitch(es); \*

= repeat whatever follows the \* as indicated.

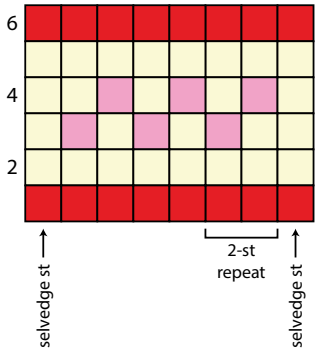
see colorwork patterns on next page...



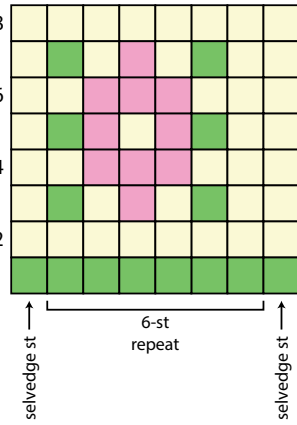


# LW5224 Girls Fair Isle Tunic

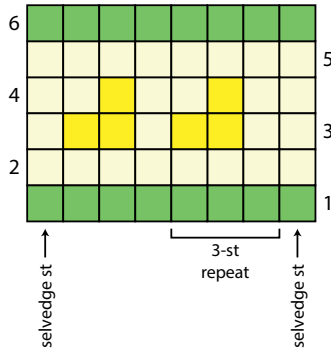
Colorwork Pattern 1



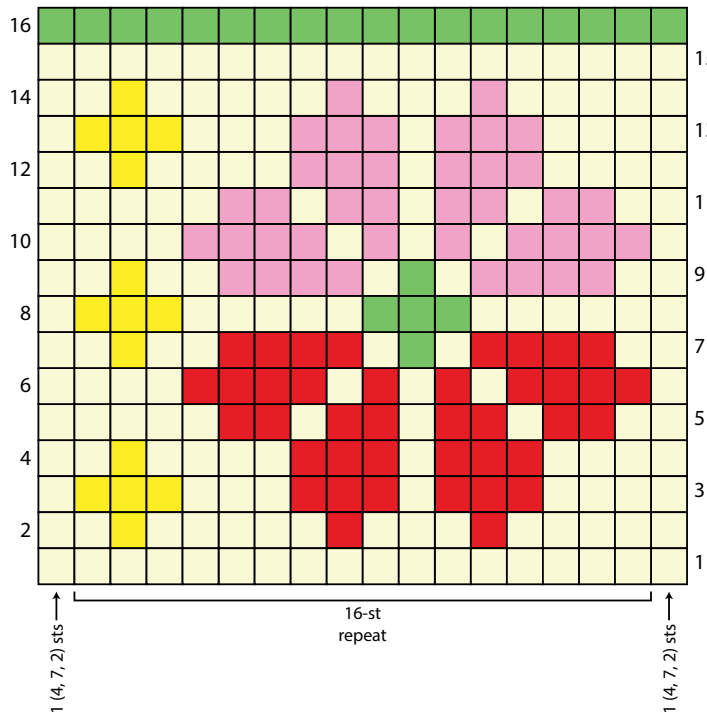
Colorwork Pattern 2



Colorwork Pattern 3



Colorwork Pattern 4



- 3220 Charcoal (A)
- 3181 Cardinal Red (B)
- 3240 Cream (C)
- 3183 Pink (D)
- 3179 Sage (E)
- 3198 Butter (F)